

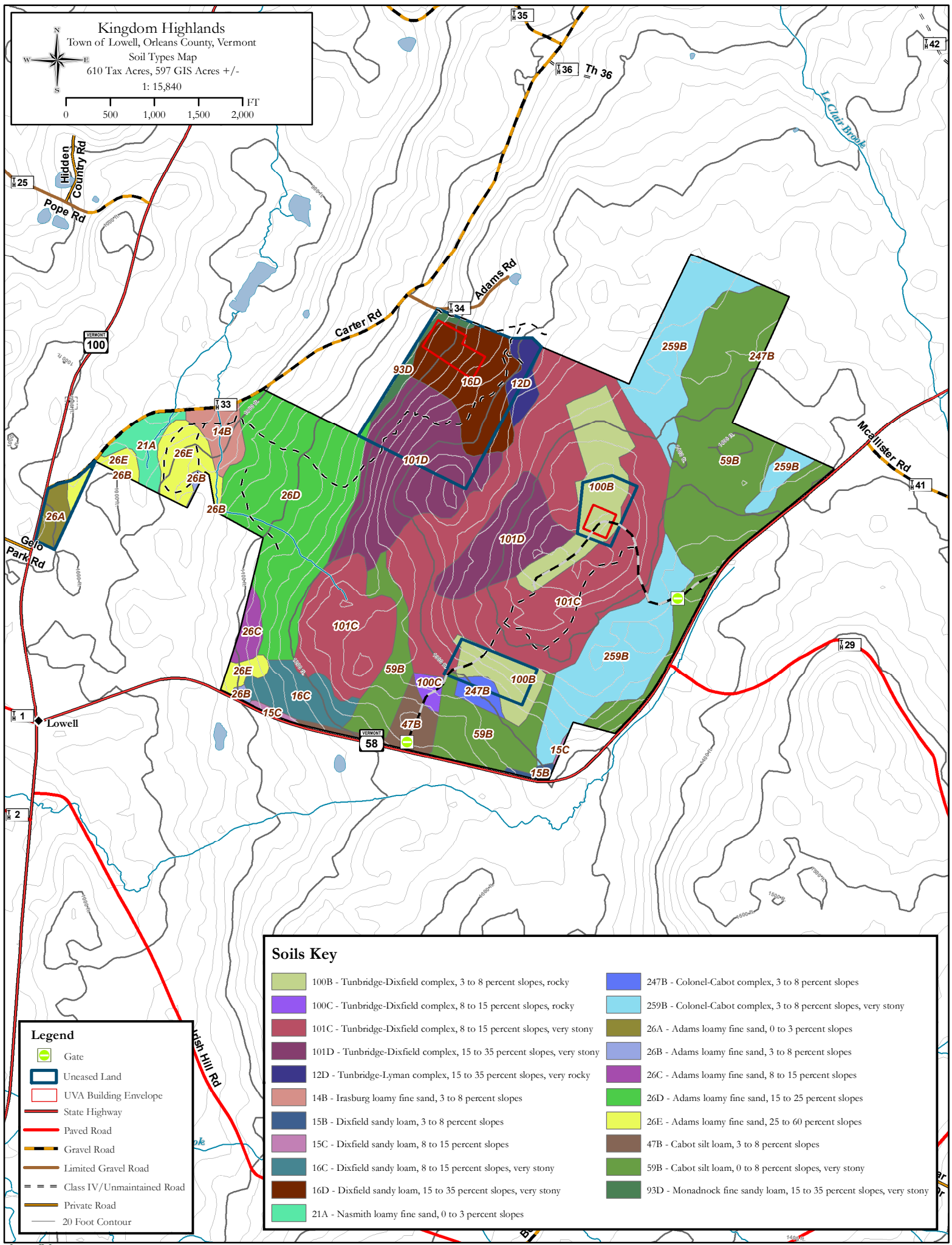
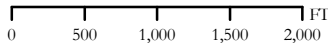
Kingdom Highlands

Town of Lowell, Orleans County, Vermont

Soil Types Map

610 Tax Acres, 597 GIS Acres +/-

1: 15,840



Legend

- Gate
- Uneased Land
- UVA Building Envelope
- State Highway
- Paved Road
- Gravel Road
- Limited Gravel Road
- Class IV/Unmaintained Road
- Private Road
- 20 Foot Contour

Soils Key

100B - Tunbridge-Dixfield complex, 3 to 8 percent slopes, rocky	247B - Colonel-Cabot complex, 3 to 8 percent slopes
100C - Tunbridge-Dixfield complex, 8 to 15 percent slopes, rocky	259B - Colonel-Cabot complex, 3 to 8 percent slopes, very stony
101C - Tunbridge-Dixfield complex, 8 to 15 percent slopes, very stony	26A - Adams loamy fine sand, 0 to 3 percent slopes
101D - Tunbridge-Dixfield complex, 15 to 35 percent slopes, very stony	26B - Adams loamy fine sand, 3 to 8 percent slopes
12D - Tunbridge-Lyman complex, 15 to 35 percent slopes, very rocky	26C - Adams loamy fine sand, 8 to 15 percent slopes
14B - Irasburg loamy fine sand, 3 to 8 percent slopes	26D - Adams loamy fine sand, 15 to 25 percent slopes
15B - Dixfield sandy loam, 3 to 8 percent slopes	26E - Adams loamy fine sand, 25 to 60 percent slopes
15C - Dixfield sandy loam, 8 to 15 percent slopes	47B - Cabot silt loam, 3 to 8 percent slopes
16C - Dixfield sandy loam, 8 to 15 percent slopes, very stony	59B - Cabot silt loam, 0 to 8 percent slopes, very stony
16D - Dixfield sandy loam, 15 to 35 percent slopes, very stony	93D - Monadnock fine sandy loam, 15 to 35 percent slopes, very stony
21A - Nasmith loamy fine sand, 0 to 3 percent slopes	